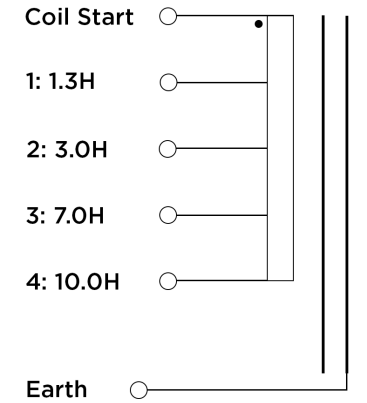


## SPECIFICATION

Parameter	Minimum	Nominal	Maximum	Units
Max Inductance		10		H
DC Resistance	-15%	766	+15%	$\Omega$
DC Current		0		mA
Dimensions		30 x 30 x 20.1		mm
Weight	-0.005	0.034	+0.005	Kg

## SCHEMATIC



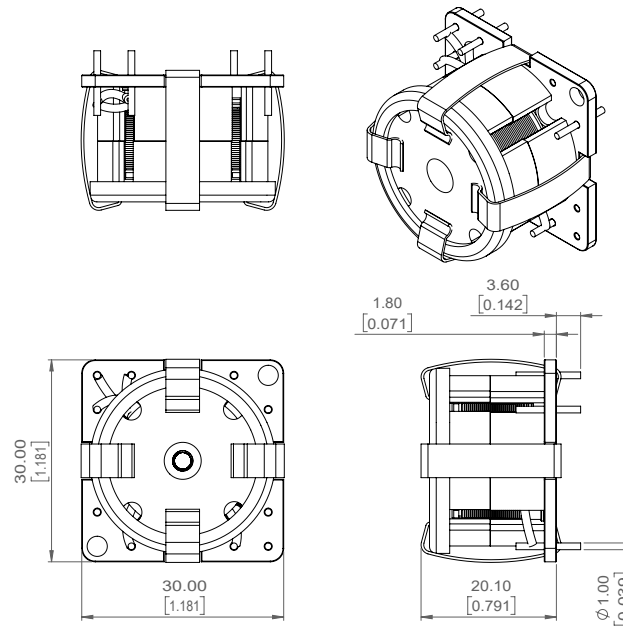
## DESCRIPTION

Our Multi-Tapped Inductor with a Pot Core is designed for audio applications, delivering precise inductance for superior sound quality. Its multi-tap design offers flexible inductance, making it ideal for fine-tuning crossover networks, filters, and equalizers. The pot core reduces electromagnetic interference (EMI), ensuring clear, noise-free performance. Built with high-grade materials, it is perfect for audio engineers seeking consistent, high-fidelity sound in their projects.

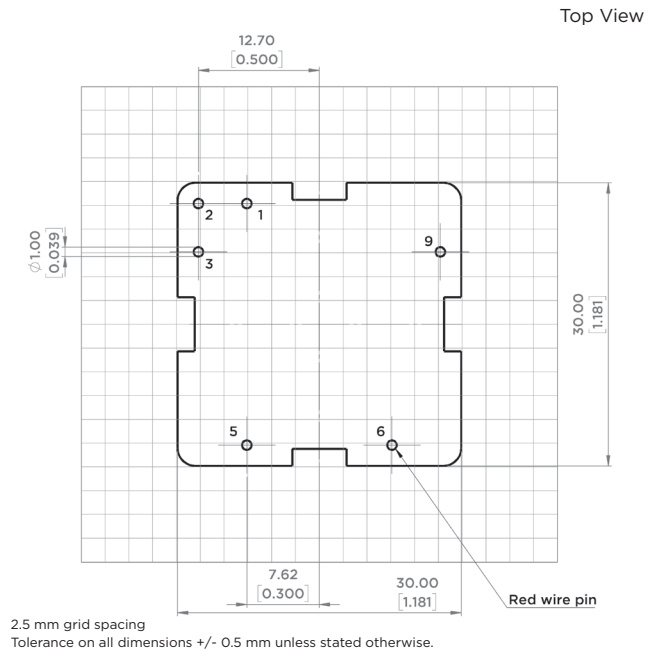
- ✓ **Multiple taps offer various impedance options for fine-tuning audio circuits.**
- ✓ **Wide Frequency Range:** Optimized for smooth performance across the entire audio spectrum
- ✓ **Low Noise Performance:** Designed to minimize interference and preserve signal clarity
- ✓ **Precise Circuit Tuning:** Enables detailed adjustments for filters and equalizers
- ✓ **Robust Construction:** Built with quality materials for reliable, long-lasting operation



## MECHANICAL DRAWING



## FOOTPRINT



Vigortronix, 16 De Havilland Way  
Witney, Oxfordshire  
OX29 0YG, United Kingdom



D0277  
Issue 1: 21/02/2025  
Multi-Tapped 10H Inductor

AUDIO INDUCTOR  
**VTX-IND3**